

Technical Production Packet for the Studio Theater



Welcome to the James Lumber Center for the Performing Arts!

The James Lumber Center (JL Center) and its staff are looking forward to working with you in support of your production. The JL Center has a wide range of support services to ensure your production's success. Contained within this packet are listings of JL Center equipment, various maps, layouts, and directions, as well as contact information for JL Center Staff. This packet is designed to serve as a reference tool for our facilities, and we encourage you to contact us with any questions you might have. Thank you and have a great show!

JL Center Website:

<http://www.jlcenter.clcillinois.edu/>

Technical Production Contacts:

Jeremy Eiden-Technical Coordinator

(847) 543-2687 ofc.

(262) 496-4351 cell

jeiden@clcillinois.edu

Pete Hansen-Technical Production Assistant (Audio)

(847) 543-2835 ofc.

(847) 421-7529 cell

phansen1@clcillinois.edu

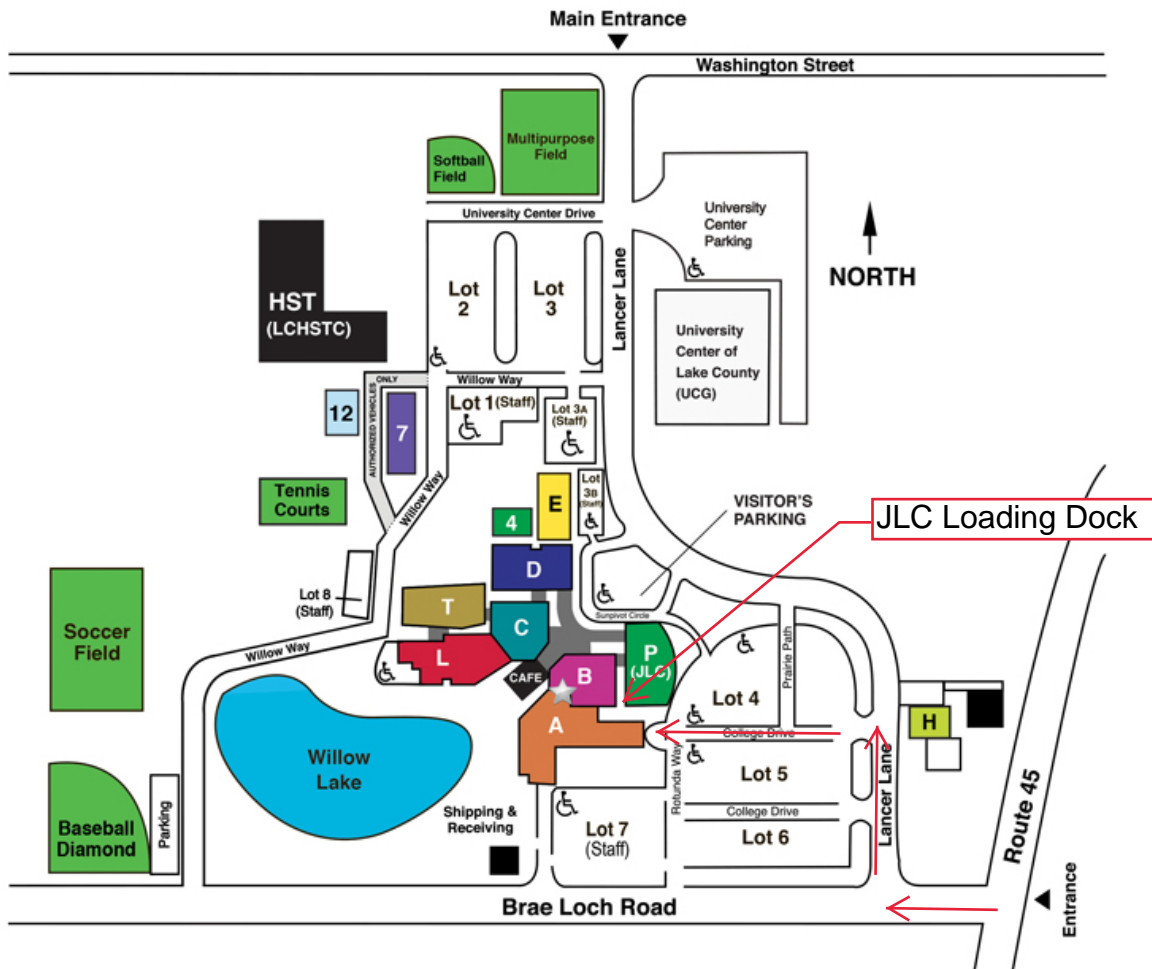
Transportation, Lodging, Hospitality Contact:

Alisa Baum-Executive Director

(847) 543-2685

abaum1@clcillinois.edu

Grayslake Campus



Directions to James Lumber Center Loading Dock

- Access Road is 1-Way only
- Shore Power Available for 1 bus in dock.
- Staff may enter through the service door (labeled P3)



View of JL Center Loading Dock
Door Dimension: 11'-11" Wide by 11'11" High
100-amp shore power available



View from USC Loading Doors to Studio Theater
Door Dimensions: 14' Wide by 16' High

Large items most load in through Scene Shop to access Studio Theater. Narrowest doorway through Scene Shop is 10' Wide by 16' High

Stage Specifications for Studio Theater

Stage Dimensions:

Proscenium: 55'-0" W by 28'-0" H

Plaster Line to Back Wall: 14'-10"

Plaster Line to DS Edge of Upper Stage: 7'-11"

Stage Right Wing: 16'-7" W (Proscenium to SR Stairs)

Stage Left Wing: 16'-3" W (Proscenium to SL Flyrail)

Lower Stage Depth: 17'-6" (with stairs along front of upper stage leading down 2'-7" to lower stage)

Lower Stage Width: 33'-0"

Thrust Stage: 13'8" D by 17'-1" W. The Thrust is made up of the middle section of the lower stage and can be raised 2'-7" to extend out from the upper stage, or removed completely to create a small orchestra pit 5'-7" below the lower stage level

Back Wall of Theater to Back Wall of House: 55'-6"

Back Row of Seats is 8'-0" above stage level

Floor Surface: ¼" Masonite with black satin finish.

Crossover: Hallway located directly behind back wall of theater.

Under Seating Vohm: Runs from stage left to stage right under audience seating. Also has one entryway DSC on the thrust via ramp.

Fly System:

-Single purchase manual counterweight system

-28 total linesets (23 over stage, 3 over apron, 2 over lower stage/thrust)

-2 sets of black masking legs and 2 black borders

-Grand Drape is Jade Green and can guillotine only.

-Black Mid Stage Travelor that can also guillotine.

-White Cyclorama (64' W by 32' H)

-Black Sharktooth Scrim (64' W by 32' H)-flexible placement

-Full Stage Black (flexible placement)

Hanging Positions for Lighting:

FOH

-Catwalk 1: Located Proscenium Left, 26'-0" H, w/ lower bar at 28'-6" and upper bar at 31'5"

-Catwalk 2: Located House Right, 26'-0" H, w/ lower bar at 28'-6" and upper bar at 31'5"

Hanging Positions for Lighting (cont.)

FOH cont.

- Catwalk 3: Located Back of House, 26'-0" H, w/ lower bar at 28'-6" and upper bar at 31'5"
- Catwalk 4: Located House Left, 26'-0" H, w/ lower bar at 28'-6" and upper bar at 31'5"
- Catwalk 5: Located Proscenium Right, 26'-0" H, w/ lower bar at 28'-6" and upper bar at 31'5". This catwalk also serves at the loading gallery for the apron and thrust flylines.
- Catwalk 6: Located Proscenium Center, 28'-0" H, w/lower bar at 30'-6" and upper bar at 33'-5".
- Catwalk 7: Located Thrust Left, 26'-0" H, w/ lower bar at 28'-6" and upper bar at 31'5"
- Catwalk 8: Located Thrust Center. 26'-0" H, w/ lower bar at 28'-6" and upper bar at 31'5"
- Catwalk 9: Located Thrust Right, 26'-0" H, w/ lower bar at 28'-6" and upper bar at 31'5"
- House Rail: Once continuous run of pipe running house left to house right along back wall of auditorium. Pipe is 8'-0" above audience walkway, and 16'-0" above stage level.

On-stage:

- 2 dedicated electrics with 30 circuits shared between the two.
- 2 light ladders (1 stage right and 1 stage left with 6 circuits on drop boxes shared between them)

Power Distribution:

- 268 Dimmers (192 for stage use and 76 for architectural use) rated at 2.4kW
- Various 20amp 120v Edison Stage circuits located around upper and lower stages.
- (1) 100amp 3 phase disconnect in a weatherproof box located in the loading dock for shore power.

Studio Line-Set Schedule

Line-Set # and Content	Distance from Proscenium
1: Open (40' batten length)	0'-6 ½"
2: Grand Drape (64' batten length)	1'-1 ½"
3: Open (40')	1'-8 ½"
4: Legs #1 (64')	2'-4 ½"
5: Open (64')	2'-10 ½"
6: Stage Right Light Ladder	----
7: 1 st Electric (40')	4'-0 ½"
8: Open (40')	5'-2 ½"
9: Black Travelor (64')	5'-9 ½"
10: Open (40')	6'-4 ½"
11: Border #2 (64')	6'-11 ½"
12: Legs #2 (64')	7'-6 ½"
13: Open (64')	8'-1 ½"
14: 2 nd Electric (40')	9'-3 ½"
15: Stage Left Light Ladder	----
16: Open (40')	10'-5 ½"
17: Open (64')	11'-0 ½"
18: Open (40')	11'-7 ½"
19: Open (64')	12'-2 ½"
20: Open (40')	12'-9 ½"
21: Full Stage Black (64')	13'-4 ½"
22: Open (40')-Unusable due to cyc	13'-11 ½"
23: Cyclorama (64')	14'-6 ½"
Over Thrust Line-Set# and Contents	Distance from Proscenium
26: Open (54')	-2'-5 ½"
27: Open (54')	-3'-11 ½"
28: Open (54')	-5'-5 ½"
29: Spare Arbor	
30: Spare Arbor	
31: Spare Arbor	
32: Spare Arbor	
33: Open (18')	-20'-5 ½"



Stage w/ Thrust lowered



Stage w/Thrust lowered



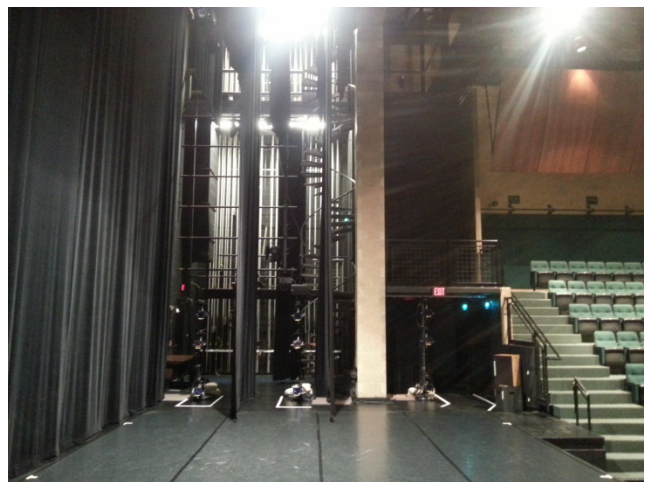
Stage w/Thrust raised



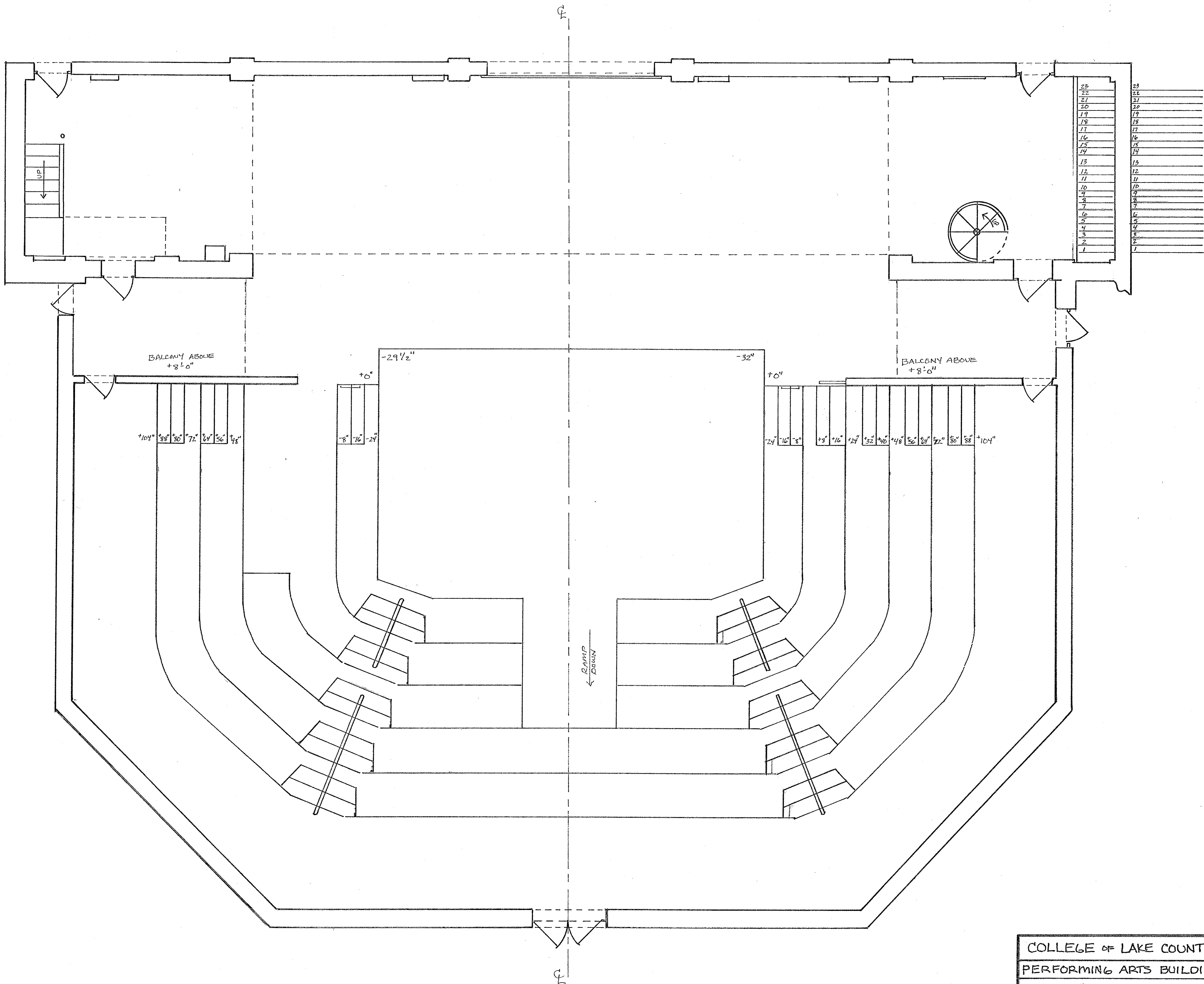
Stage w/Thrust raised



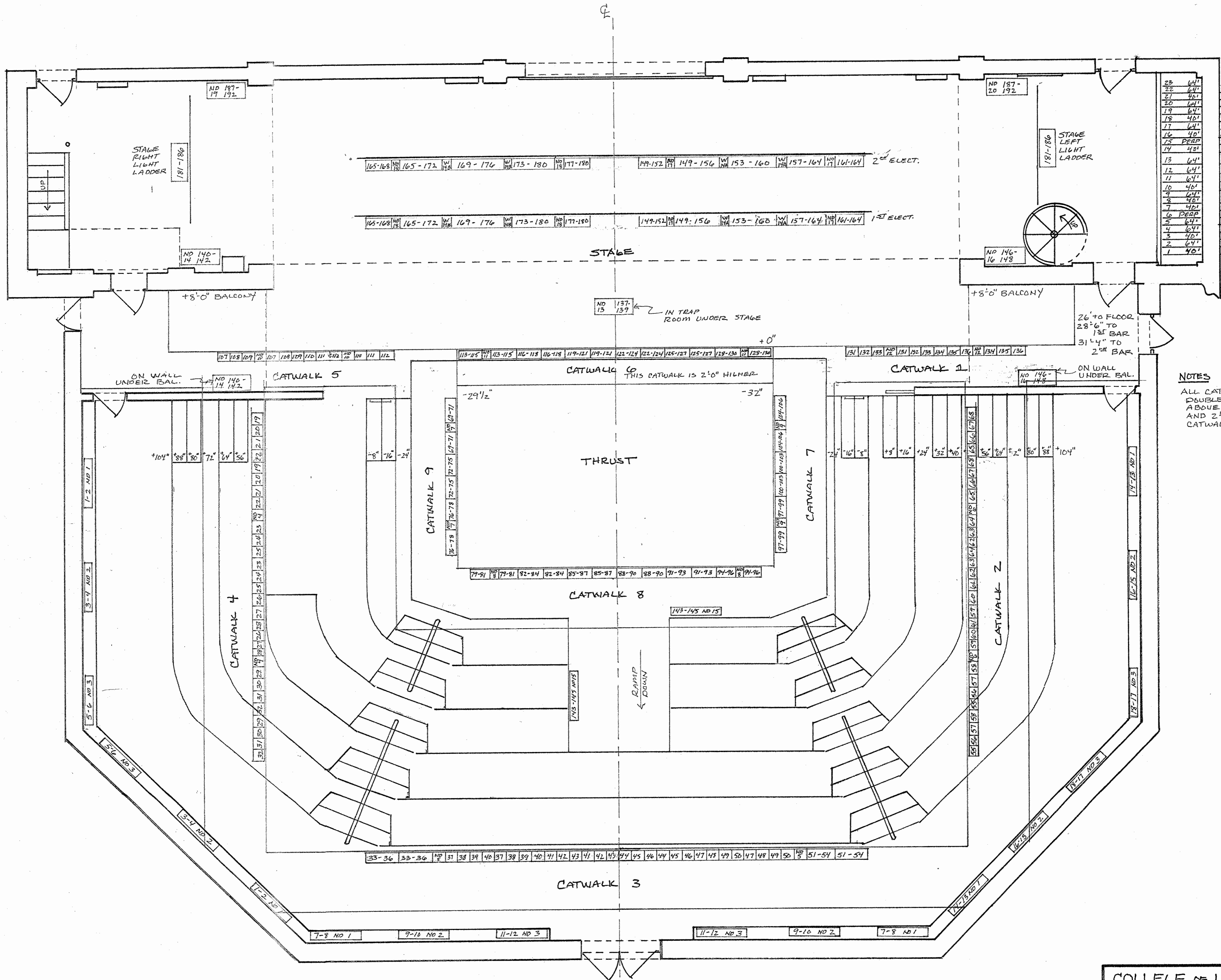
Stage Right



Stage Left



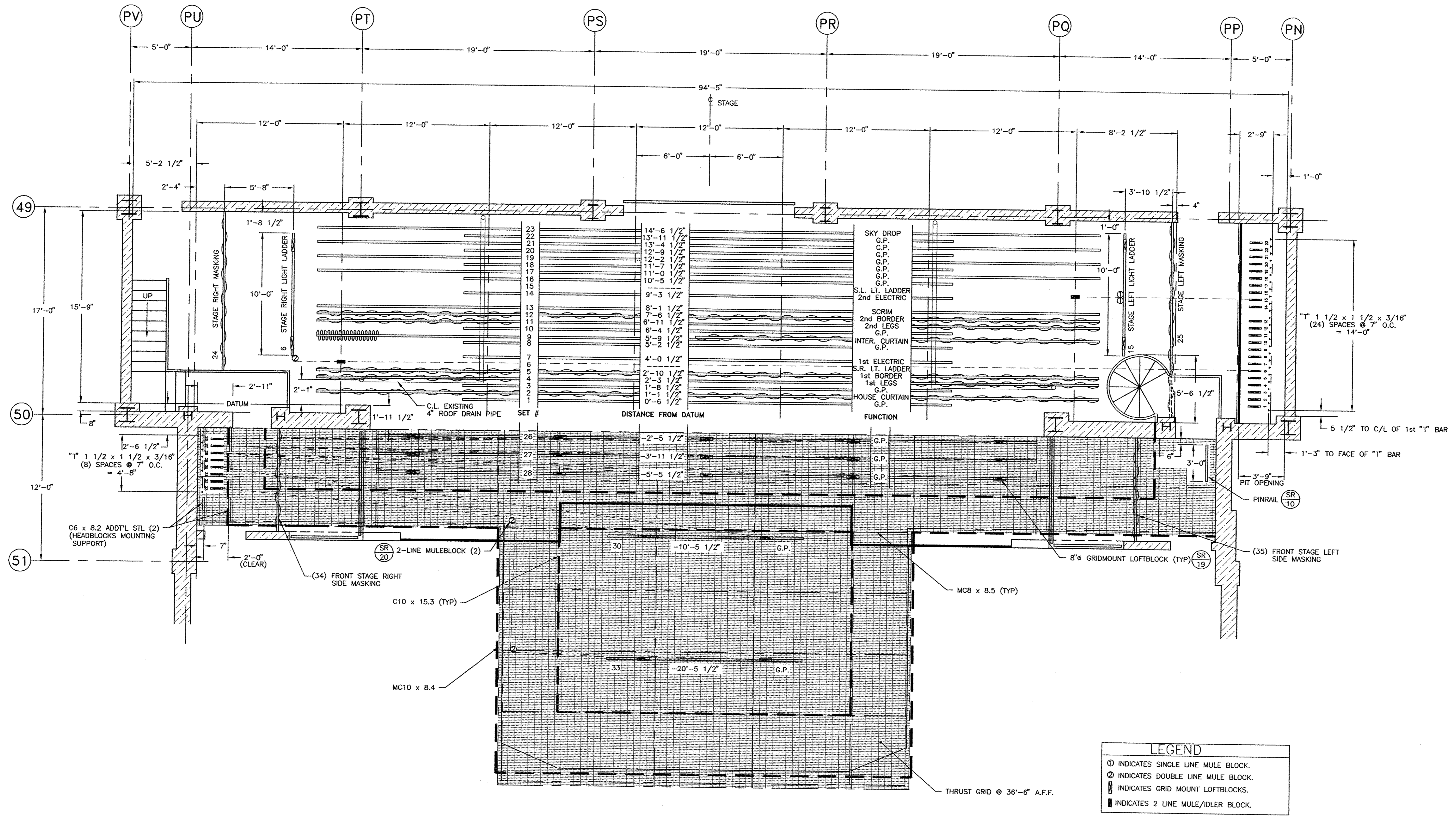
COLLEGE OF LAKE COUNTY	
PERFORMING ARTS BUILDING	
STUDIO THEATRE	
GROUND PLAN	
SCALE 1/4" = 1'-0"	DRAWN BY Thomas B. Mitchell 6/03



23	64"	23	COLORAMA
22	64"	22	
21	64"	21	
20	64"	20	
19	64"	19	
18	64"	18	
17	64"	17	
16	64"	16	
15	PERP	15	15' LIGHT LADDER
14	40"	14	14' DR ELECTRIC
13	64"	13	
12	64"	12	
11	64"	11	
10	40"	10	
9	40"	9	9' TRAVELER
8	40"	8	
7	40"	7	7' 15' ELECTRIC
6	PERP	6	6' SP LIGHT LADDER
5	64"	5	
4	64"	4	
3	64"	3	
2	64"	2	2' GRAND DRAPE
1	40"	1	

NOTES
 ALL CATWALKS ARE DOUBLE BARRIED 2'-0" ABOVE EACH OTHER AND 2'-0" FROM THE CATWALK FLOOR.

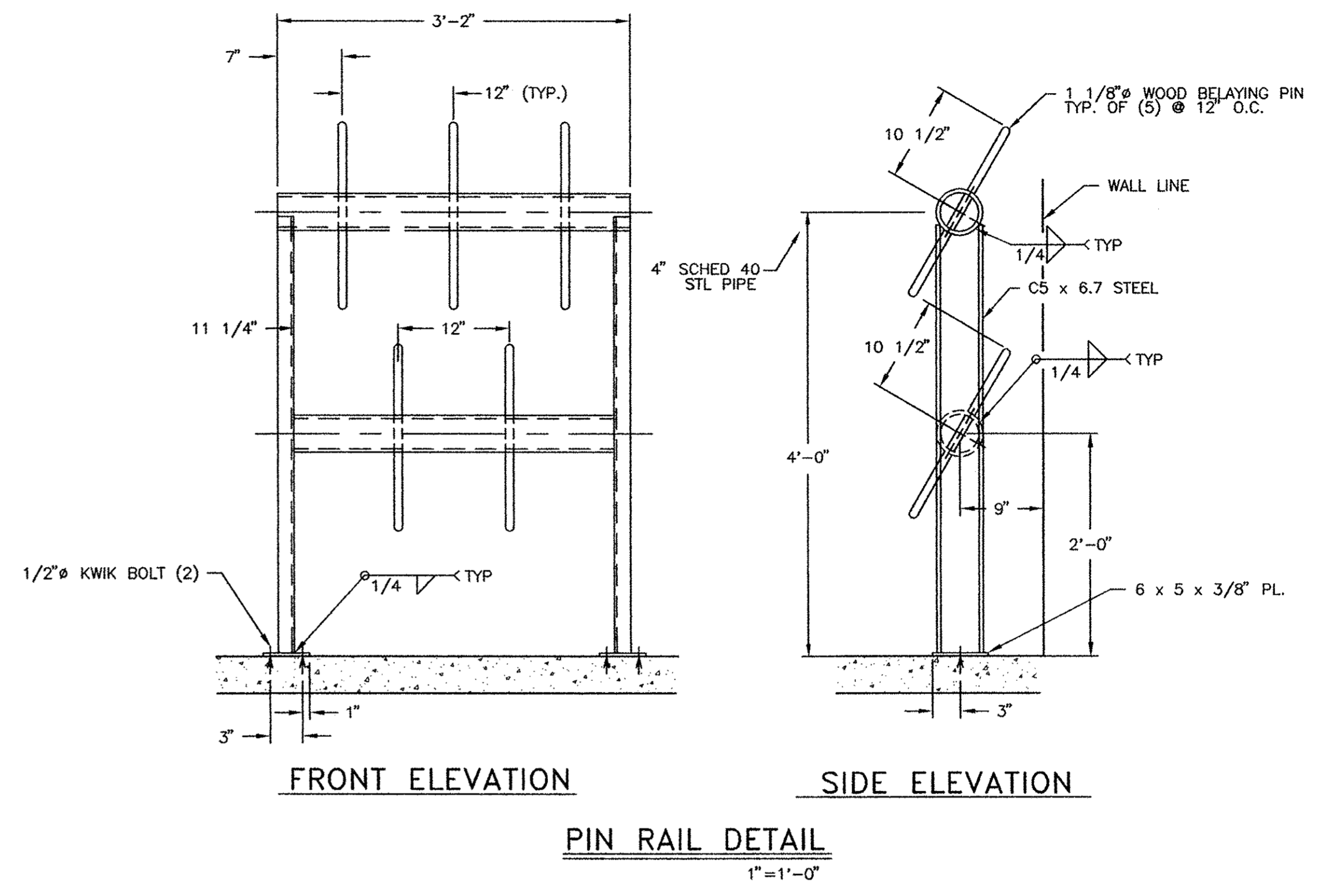
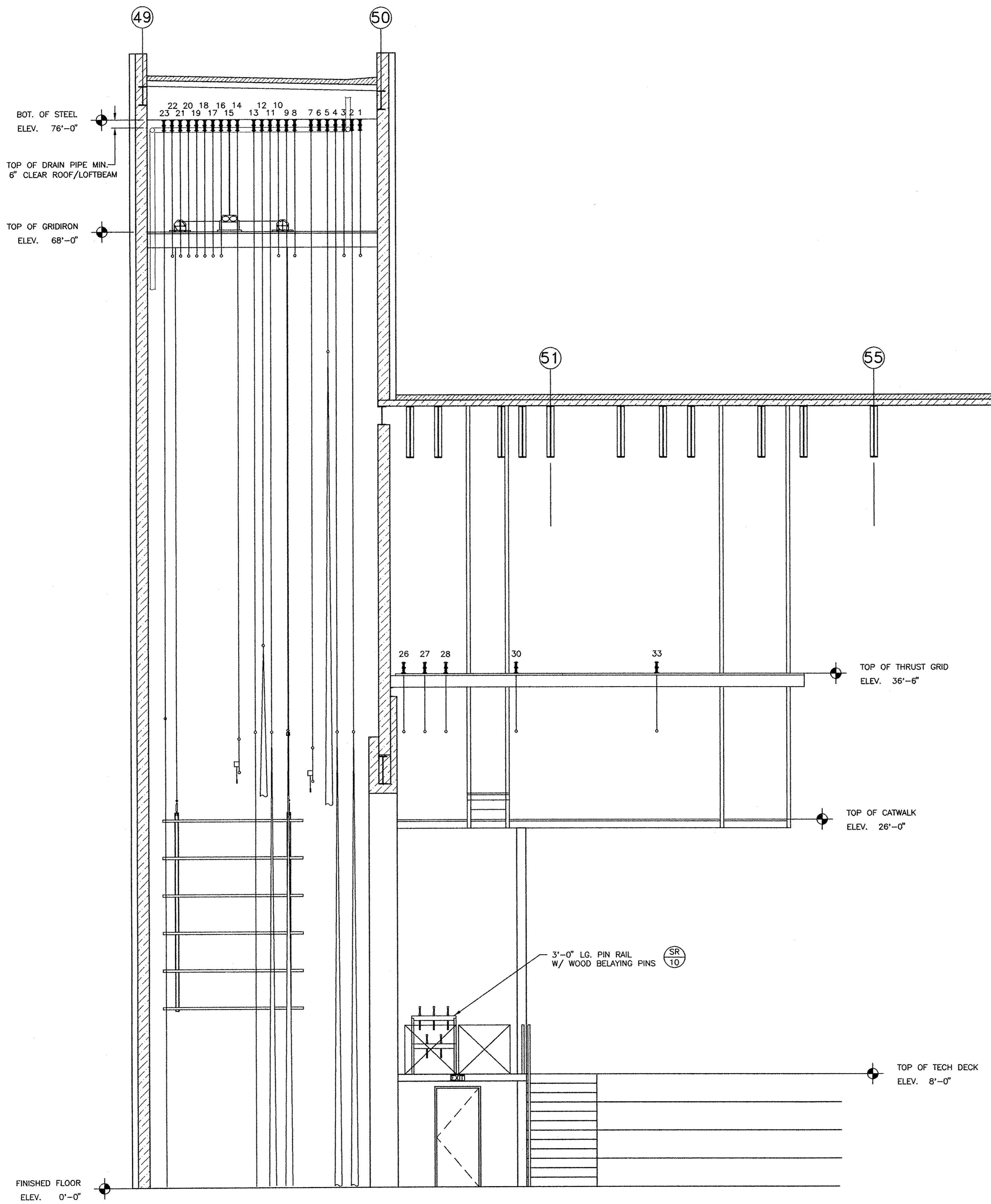
COLLEGE OF LAKE COUNTY
PERFORMING ARTS CENTER
STUDIO THEATRE
LIGHT PLOT
SCALE 1/4" = 1'-0" DRAWN BY Thomas B. Mitchell 6/03



PLAN VIEW - THRUST THEATER
 (ROOM P-155) 1/4" = 1'-0"

LEGEND
 ⊙ INDICATES SINGLE LINE MULE BLOCK.
 ⊗ INDICATES DOUBLE LINE MULE BLOCK.
 ▨ INDICATES GRID MOUNT LOFTBLOCKS.
 ▩ INDICATES 2 LINE MULE/IDLER BLOCK.

SCALE	1/4" = 1'-0"	CHECKED	J. R. S.	DWG. FILE	GRA-SR09	DATE	6-13-95
DRAWN	R.S.	CHECKED	J. R. S.	DWG. FILE	GRA-SR09	DATE	6-13-95
JOB TITLE							
COLLEGE OF LAKE COUNTY				LEGAT ARCHITECTS, INC.			
GRAYS LAKE, ILLINOIS				ENGINEER			
10750				CONSULTANT			
10750				CONTRACTOR			
10750				REVISION			
10750				NO.			
10750				REVISED PER FIELD CHECK			
10750				8-19-96			
10750				DATE			

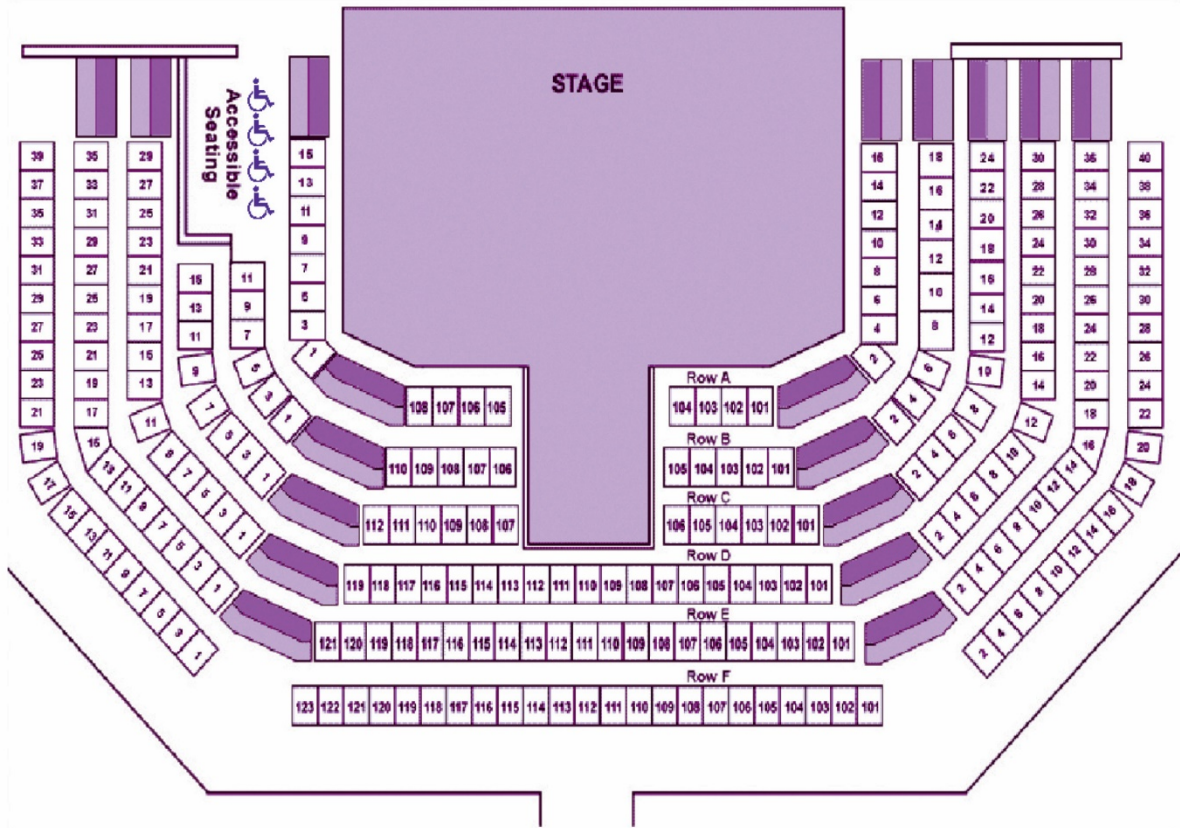


DATE	8-19-96
REVISION	1
NO.	1
REVISION	REVISED PER FIELD CHECK
CONTRACTOR	JOSEPH J. HENDERSON & SON INC.
CONSULTANT	JERTY/BOYS, INC.
ENGINEER	LEGAT ARCHITECTS, INC.
ARCHITECT	LEGAT ARCHITECTS, INC.
JOB NO	10750
LOCATION	GRAYSLAKE, ILLINOIS
JOB TITLE	COLLEGE OF LAKE COUNTY
DATE	6-13-95
DWG. FILE	GRA-SR10
CHECKED	H. L. L. L.
DRAWN	R.S.
SCALE	1/4" = 1'-0"
SHEET TITLE	CROSS SECTION - THRUST THEATER

SECOA
The Stage Equipment Company
Minneapolis, MN.
(612) 546-6313

SR
10

Studio Theater Seating Plan



Lighting, Effects, and Projection Inventory for James Lumber Center

Note: All instrumentation has 3 pin stage connectors unless otherwise noted.

Intelligent Fixtures

(2) Rosco I-Cues-uses (1) shared power supply

Ellipsoidals

--ETC Source 4 750's (only 575w HPL lamps are available)

(6)- 5 degree (10x23)

(8)- 10 degree (8x13)

(45)- 14 degree (6x22)

(64)- 19 degree (6x16)-blue lens barrel

(69)- 26 degree (6x12)-white lens barrel

(84)- 36 degree (6x9)-yellow lens barrel: 4 of these are the older style and can only be lamped up to 575w

(4)- 50 degree (4.5x6)-red lens barrel

(2)- 50 degree lens train

Fresnels

--Strand Series

(11)- 6" fresnel (1kW BTR lamps)

(24)- 8" fresnel (2kW BVW lamps)

--Altman Series

(8)- 3" inky fresnel (100w lamps) 4 w/Edison connectors and 4 w/stage pin connectors

PAR cans

--ETC Series

(120)- Source 4 EA PARs w/all 4 lenses (HPL 750w lamps)

Cyc Lights

--Strand Iris 4 Series

(20)- 4-circuit cyc lights (1kW FFT lamps)

Strip Lights

- Altman R40 Series
- (12)- 4 circuit strips (250w flood lamps)
- Altman ZS-4 Zip Strips
- (6)- 4 circuit strips (75w EYC lamps)

Follow Spots

- No Follow Spots are available for the Studio Theater

Accessories

- (4) City Theatrical ShowBaby 5 DMX Transceivers (5 pin DMX)
- (1) Doug Fleenor Design DMX Iso-Splitter (1 in, 5 out, 5 pin DMX)
- (1) Bakerwood Lite Industries DMX Controllable Projector Dowser
- (13) Source 4 drop in irises
- (32) 6-1/2" stacker top hats
- (12) 7-1/4" top hats
- (12) 10" top hats
- (28) 7-1/4" barn doors w/color slot- 4 way
- (14) 7-1/4" barn doors w/o color slot- 4 way
- (4) 7-1/4" barn doors w/ color slot- 2 way
- (12) 10" barn doors w/o color slot- 4 way-for 8" fresnels only
- (53) 6-1/2" donuts for Source 4 ellipsoidal
- (8) 7-1/4" donuts Source 4 14 degrees
- (10) 50lb round base stand for light booms
- (4) 50lb square base stand for light booms
- (2) 6'-3" boom pipe
- (4) 7'-0" boom pipe
- (7) 11'-0" boom pipe
- (10) 10'-6" boom pipe
- (24) 15" sidearms with one tee
- (18) 18" sidearms with one tee
- (8) 24" sidearms with two tee's

Cable

-Various lengths of #12/3 SO cable with a variety of adapters, two-fers, and three-fers

Lighting Boards

-- The Mainstage Theater uses the ETC Ion XE20 console with 1024 channels and 1024 outputs. It has two 22" touch screen monitors, mouse and keyboard. The console is connected via sACN to lighting system with a 7" Unison Touchscreen available for architectural lighting control.

-- The Studio Theater uses the ETC Ion XE20 console with 1024 channels and 1024 outputs. It has two 24" touch screen monitors, mouse and keyboard. The console is connected via sACN to lighting system with a 7" Unison Touchscreen available for architectural lighting control.

--Laptop with ETC Nomad widget and dongle and separate 19" screen monitor is available for use at designer table at FOH

Effects

- (1) Ultratec Radiance Hazer-DMX controllable
- (2) 8" Mirror Balls w/single speed motors
- (4) American DJ Egg Strobes w/rate control

Please note that Village of Grayslake Ordinance prohibits the use of pyrotechnics in the James Lumber Center

Projection

All video playback via PowerPoint and/or Q-Lab Software

(1) Sony VPL-FH2700L WUXGA (1920x1200) Laser Projector-7000 ANSI Lumens. Has lens shift, corner and edge correction and image warping. Has a zoomable lens that is interchangeable (2.02:1 – 2.67:1). Has inputs for HDMI, DVI, SDI, and VGA.

(1) Christie LW555 WXGA (1280 x800) LCD Projector-5500 ANSI Lumens. Has a zoomable lens that is interchangeable (1.70:1 – 2.89:1). Has input for HDMI, DVI, Composite, and VGA

(1) NEC NP401W WXGA (1280x800) LCD Projector-4000 ANSI Lumens. Has a zoomable lens that is not interchangeable (1.36:1 – 2.26:1). Has inputs for HDMI, S-Video, Composite, and VGA

(1) HP 15" ProBook Laptop (I7 dual core w/16GB RAM and 120GB SSD) w/ Windows 10 and Office 2016, DVD/RW drive and display port output

-White Cyclorama (64' H by 32 W Leno Filled Scrim) is the only projection surface in the Studio Theater

Circuit Schedule for Studio Theater

Stage Lighting Circuits

House Rail: 1-18
Catwalk Four: 19-32
Catwalk Five: 33-54
Catwalk Six: 55-68
Catwalk Seven: 69-78
Catwalk Eight: 79-96
Catwalk Nine: 97-106
Catwalk Three: 107-112
Catwalk Two: 113-130
Catwalk One: 131-136
Trap Room: 137-139
SR Vohm/SR Proscenium Wall: 140-142
Center Vohm/Thrust: 143-145
SL Vohm/SL Proscenium Wall: 146-148
1st and 2nd Electric: 149-180
SL and SR Light Ladders: 181-186
USL and USR Wall Pockets: 187-192

Architectural Lighting Circuits

House Lights : 193-203
Circulation Lights: 205-209
Decorative Lights: 210-213
Platform Lights: 214-215
Lecture Lights: 217-228

Non Dims (229-248)

229 ND 1 House Rail HL	239 ND 11 Prosc. Catwalk SC
230 ND 2 House Rail HL & HR	240 ND 12 Prosc. Catwalk SL
231 ND 3 House Rail HR	241 ND 13 Pit/Light Booth
232 ND 4 Outer Catwalk SR	242 ND 14 DSR Vohm/Prosc.
233 ND 5 Outer Catwalk SC	243 ND 15 Center Vohm/Thrust
234 ND 6 Outer Catwalk SL	244 ND 16 DSL Vohm/Prosc.
235 ND 7 Inner Catwalk SR	245 ND 17 1 st /2 nd Elec. SR
236 ND 8 Inner Catwalk SC	246 ND 18 1 st /2 nd Elec. SL
237 ND 9 Inner Catwalk SL	247 ND 19 USR Wall
238 ND 10 Prosc. Catwalk SR	248 ND 20 USL Wall

Architectural Lighting Circuits cont.

Work Lights [Non-Dimmable] (249-268)

249 WL 1 Aisle Lights	259 WL 12 Loading Bridge
250 WL 2 Blue Running Lights	260 WL 13 Gridiron
251 WL 3 Perf. In Progress Lights	261 WL 14A/B 1 st /2 nd Electrics
252 WL 4 Light Booth	262 WL 15 Vohm Crossover
253 WL 5 Sound Booth	263 WL 16 SR Wing
254 WL 7 Spare	264 WL 17 SL Wing
255 WL 8 Outer Catwalk	265 WL 18 Trap Room Approach
256 WL 9 Inner Catwalk	266 WL 19 Trap Room
257 WL 10 Thrust Grid	267 WL 20 Rigging Pit
258 WL 11 Fly Gallery	268

Studio Audio System

- 1) 2-way PAS system powered by Ashly and Crown
 - a) System Hi-Pass at 50 Hz
 - b) Hi-Mid Crossover at 1.3 kHz
 - c) 6 PAS PI-152A with 15" coaxial woofer powered by Crown ComTech 1600 and 2" compression driver powered by Ashly FTX 1501 Series II
 - d) 3525 Watts total in system
 - e) System processing by BSS Z-Blu London 16
 - f) System flown under inside catwalk
- 2) Yamaha LS9-16
 - a) 16 channels
 - b) 16 Mix /8 Matrix/LCR, Stereo, & Mono Config
 - c) 12 Omniouts
 - d) 8 virtual rack spaces
 - i) Combination of 4 FX and 4 Graphic EQ slots
 - e) Fully Parametric 4 band EQ
 - f) Programmable Scenes with recallable Head Amps
 - g) USB recorder/player
- 3) Effects Playback Speaker System
 - a) 2 JBL 4652 with 1" Horn Driver and 12" Woofer passively crossed over at 2 kHz
 - b) 2 cabinets are flown on the back wall of the House underneath the Tech booths
 - c) Powered by 1 Ashly CFT 1800
 - d) 200 Watts each

Studio Audio System cont.

- 4) Monitor System
 - a) 4 EV 1202 2-way passive with 12" woofer and 1" HF driver
 - b) 300 Watts each
 - c) Powered by 4 Ashly CFT 1800

Audio Equipment Inventory

Generic Name	Brand & Model Number	Total
Condenser Microphone	AKG C414 B-ULS	4
Condenser Microphone	AKG C535 EB	2
Dynamic Microphone	Audio-Technica ATM41HE	4
Ribbon Microphone	Beyerdynamic M160 NC	3
Dynamic Microphone	Beyerdynamic M88	1
Boundary Microphone	Crown PZM-6D	4
Dynamic Microphone	EV RE11	1
Dynamic Microphone	EV RE16	2
Dynamic Microphone	EV RE27	2
Dynamic Microphone	Sennheiser MD 421II	4
Dynamic Microphone	Sennheiser MD 431II	4
Dynamic Microphone	Sennheiser MD 441-U	2
Dynamic Microphone	Sennheiser 835-S	3
Dynamic Microphone	Sennheiser E604	3
Condenser Microphone	Shure Microflex podium mic (MX418)	2
Dynamic Microphone	Shure SM57-LC	6
Dynamic Microphone	Shure SM58-LC	6
Condenser Microphone	Shure SM81-LC	6
Condenser Microphone	Shure SM87-LC	2
Condenser Microphone	Shure Beta 91a	1
Condenser Microphone	Shure KSM 27	2
Condenser Microphone	Behringer ECM-8000	1
Boundary Microphone	Crown PCC-160	5
Hanging Mic (Cardiod or Hypercardiod)	Audio-Technica U853R	4
Shure Wireless Transmitter Handheld	ULXD2 G50 (470- 534 MHz) B58's	4
Shure Wireless Transmitter Beltpack	ULXD1 G50 (470- 534 MHz)	4
Shure Wireless Transmitter Handheld	ULX P J1 Band (554-590 MHz) SM58's	5
Shure Wireless Transmitter Beltpack	ULX P J1 Band (554-590 MHz)	7
Shure Wireless Receiver	ULXD4Q G50Band (470-534 MHz)	1
Shure wireless	ULX P J1 Band (554-590	7

Receivers	MHz)	
Antenna Splitter/Power Distro	Shure UA844SWB	4
Directional Antenna Paddle	Shure UA870USTV	4
Countryman lav mic	B6W5FF05LSL	14
Countryman headset mic	E6XOW5T1SL	2
Shure lav mic	WL50	1
Shure lav mic	WL93	3
Playback Computer	2017 iMac 21.5" w/ Qlab	2
Audio interface	RME Fireface UC	1
Audio interface	PreSonus Studio 26	1

Passive DI Box	Whirlwind PC DI	2
Passive DI Box	Whirlwind IMP 2	1
Passive DI Box	Whirlwind Director	4
Passive DI Box	Radial Pro D2	2
Active DI Box	Radial JDV-MK3	1
Passive DI Box	Radial JDI-MK3	2
Active DI Box	Countryman 85	1

Sound Console	Midas Verona 480	1
Sound Console	LS9-32	1
Sound Console	LS9-16	1
CD Player	Denon DN-C680	1
CD Player	Denon DN-C640	1
CD Recorder	HHB BurnIT Plus	1
EFX Unit	Lexicon MPX 1	1
Delay Unit	T.C. electronic D-Two	1
Compressor	dbx 1046	2
Headphones	Sony MDR 7506	1
Equalizer	Klark Teknik DN360	3

Stage Monitors	Yamaha Nexo PS10R2	8
Fills	EAW JF60z	2
Front Fills (Mainstage Only)	D&B E6	4
Speaker Stands	Ultimate telelock TS-90B black	4
Speaker Stands	Ultimate	2
Heavy Duty Mic. Stand	K&M GS	2

Short Tripod Mic. Stand w/ boom	AKG\K&M	12
Tall Tripod Mic. Stand w/ boom	AKG\K&M	16
Table Top Mic. Stand	Atlas	4
Tall Round Base Mic. Stand	Atlas	6
Tall Round Base Clutch Mic. Stand	K&M	3

Snake	Whirlwind 150' 32/10 Channel	1
Snake	Whirlwind 100' 16/4 Channel	1
Snake	Whirlwind 50' 16ch	1
Snake	Whirlwind 50' 12ch	1
Snake	Whirlwind 50' 6ch mini	1

Intercom Base Station	Clear-Com MS222	3
Intercom Speaker Station	Clear-Com PL Pro RM220	2
Basestation Microphones	Clear-Com gooseneck mics	5
Intercom Beltpack	Clear-Com RS501	18
Intercom Headset	Clear-Com CC85	18
Wireless Intercom Base Station	Pliant Technologies Crewcom 900 Mhz	1
Wireless Intercom Beltpack	Pliant Technologies Crewcom 900 Mhz 2 ch packs	6

Drum Shield	Clear Sonic AR5-5	1
5'x2' Acoustic absorber	Clear Sonic S5-2	2
4'x2' Acoustic absorber	Clear Sonic S4-2	2
2'x2' Acoustic absorber	Clear Sonic S-2	4

Grand Pianos from Mainstage are not available for use in Studio Theater

Dressing Rooms

- Men's, Women's, and Chorus Dressing Rooms are located upstage right of the Studio Theater
- Star Dressing/Green Room is located 75 feet from up stage left of the Studio Theater
- All Dressing Rooms have selectable program feed and paging capabilities
- Men's, Women's, and Star Dressing rooms are equipped with costume racks, make-up mirrors/lights, showers (one per space), sinks, and toilets. Men's and Women's also have lockers available for storage. (user must provide their own lock)
- Green Room has lockable cabinet available to store and secure personal items if needed
- Chorus Dressing Room is equipped with costume racks, makeup mirrors/lights, and sink
- Additional Dressing Room space can be added in Experimental Theater (when available) by using portable partitions, tables, chairs, and mirrors. The Experimental Theater is located approximately 50 feet from upstage left of the Studio Theater.

Men's Dressing Room:



- Makeup stations for 4 persons. Can comfortably hold 6 to 8 persons

Women's Dressing Room



- Makeup stations for 4 persons. Can comfortably hold 8 to 10 persons

Chorus Dressing Room



-Make up stations for 20 persons. Can comfortably hold 26 to 30 persons

Star Dressing Room



-Makeup stations for 2 persons. Can comfortably hold 3 persons.

Hospitality Spaces

- Green room is equipped with sofas, chairs, and conference table with chairs for 10, telephone, sink, microwave, and refrigerator.
- Lockable cabinet available for secure storage of personal items if desired
- Wi-Fi is available in the Green Room, Mainstage Theater or Lobby Spaces



Green Room (Star Dressing is attached)



Experimental Theater-Can be used as alternate hospitality or dressing room space. For dressing room usage, partitions, tables, chairs, mirrors, and rugs are available.